



ORENDORF
CUSTOM HOMES

the Manchester - 2,850 Sq. Ft.



◆ TRADITIONAL



◆ COLONIAL



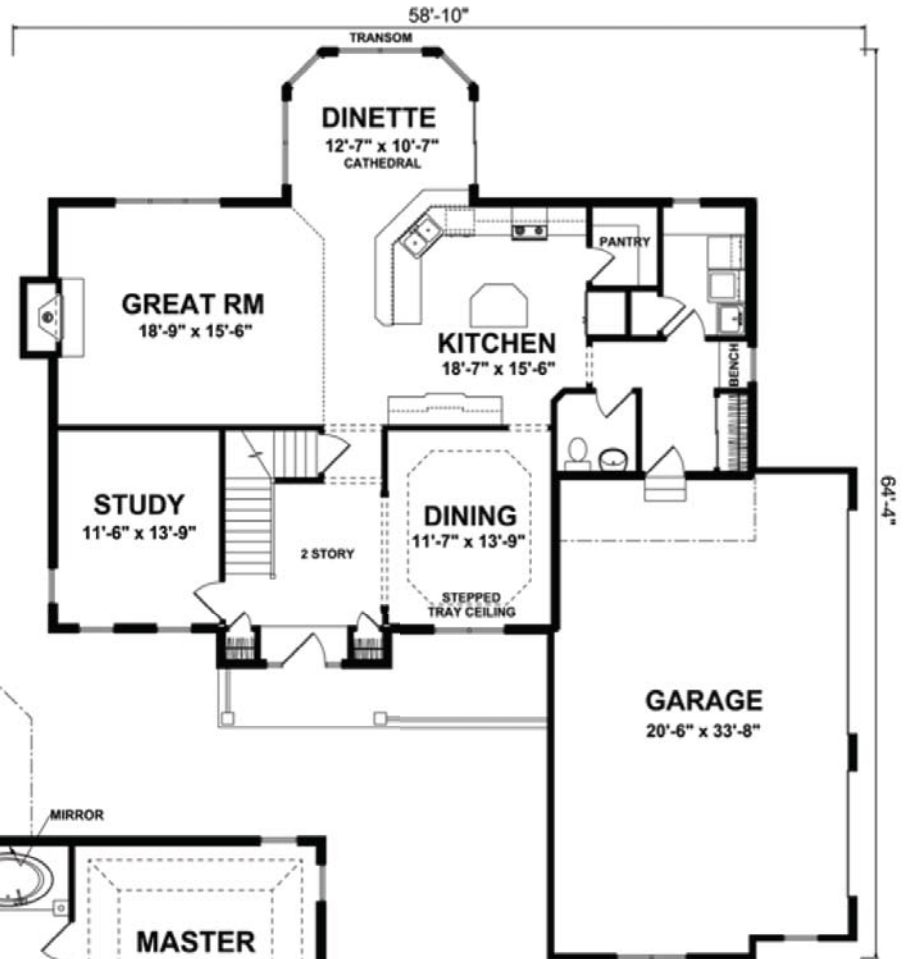
◆ FRENCH COUNTRY

The front elevation shown above is an artist's rendering and for illustrative purposes only. All floor plans, exterior renderings and dimensions are approximate and subject to change. Standard floor plans and elevations may differ from those shown based on modifications, options and improvements. Contact salesperson for standard features. Prices and specifications are subject to change without notice or obligation.



the Manchester - 2,850 Sq. Ft.

1st Floor 1,557 Sq. Ft.



2nd Floor 1,293 Sq. Ft.

